



**NECTEC**  
a member of NSTDA



**NECTEC**  
a member of NSTDA

## Developed by

Location and Automatic Identification Systems Research Team (LAI)

Communication and Networks Research Group (CNWRG)

- ☎ 0 2564 6900 ext. 2636, 2631
- ✉ kamol.kaemarungsi@nectec.or.th
- ✉ la-or.kovavisaruch@nectec.or.th



## Contact and more Information

Strategic Planning and Partner Development Division (SPD)

- 📍 National Electronics and Computer Technology Center  
112 Thailand Science Park, Phahonyothin Road, Khlong Nueng,  
Khlong Luang District, Pathumthani 12120, Thailand
- ☎ 0 2564 6900 ext. 2347, 2353, 2361, 2383
- ✉ business@nectec.or.th



# Real-Time Indoor Positioning System Platform Using Bluetooth Low Energy

**UNAI-BLE**



# Real-Time Indoor Positioning System Platform Using Bluetooth Low Energy

UNAI-BLE



## Applications

1. Industrial uses for tracking:
  - Trade exhibitions
  - Medical equipment
  - Warehouses
  - Schools
2. Personnel or asset tracking and indoor movement analysis



“UNAI-BLE” is an online platform that provides indoor location or movement records of personnel or assets. The platform comprises RF receivers (or “anchors”) and RF transmitters (or “tags”) that incorporate embedded system technology and wireless communications based on Bluetooth Low Energy and Wi-Fi standards, enabling its devices to transmit further than RFID devices.



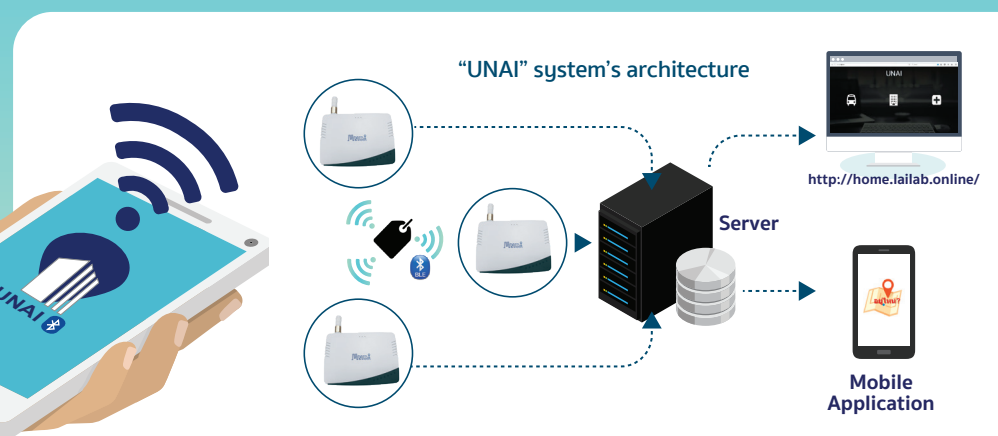
schools



retail business



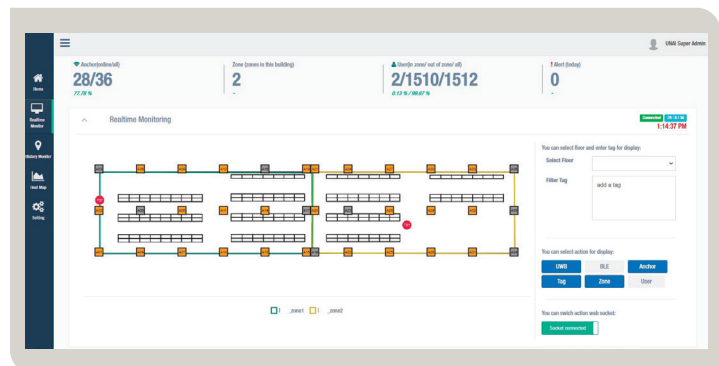
warehousing & distribution



Tags



Wristband Tag



## System integrators seeking business value enhancement by using indoor location information